

# 2020 Annual Report



**Allie is happy  
as she can be.**

She fits in good with our family. The staff was wonderful with how knowledgeable they were about the cats.

XOXO  
PATTI + ALLIE



WINNIE BERRY  
**HUMANE  
SOCIETY**  
of Angelina County



# Contributions

GENERAL DONATIONS	\$40,277
BEQUESTS	\$46,365
FUNDRAISERS	\$58,739

## GRANTS

<b>SIMON &amp; LOUISE HENDERSON FOUNDATION</b> Funds awarded for general use	\$10,000
<b>BISSELL PET FOUNDATION</b> Funds awarded for reduced-fee adoption events	\$3,150
<b>WE LOVE LUFKIN GRANT</b> Funds awarded for pandemic relief	\$5,000
<b>KURTH GRANT</b> Funds awarded for shelter operations and animal care	\$75,000
<b>T.L.L. TEMPLE FOUNDATION GRANT</b> Funds awarded for Low-income Spay/Neuter Program	\$40,000
<b>LYNN FISCHER FOUNDATION</b> Funds awarded for general use	\$10,000
<b>CARMAGE &amp; MARTHA ANN WALLS FOUNDATION</b> Funds awarded for general use	\$5,000
<b>OTHER GRANTS</b>	\$1,803

**TOTAL** **\$295,334**

**2.34** tons of dry food



81% DOG FOOD  
19% CAT FOOD

**2,442**

cans of wet food



31% DOG  
69% CAT FOOD

**1.54** tons of cat litter



In 2020, the shelter received

**307** material donations

6% decrease from 2019

**215** blankets

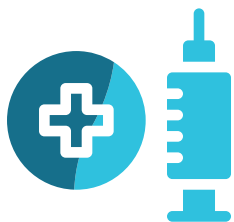


**70** beds

THANK YOU TO OUR VETERINARY PARTNERS



**626**  
**spay/neuter**  
**surgeries**



**38% FACILITY SPAY/NEUTER**

(adopted animals before leaving facility  
and animals waiting for adoption)

**62% COMMUNITY SPAY/NEUTERS**



**90**  
**avg days**  
**of stay**

**32 DAYS FOR CATS**  
**149 DAYS FOR DOGS**

## Expenses

**VETERINARY SERVICES**

**\$49,627**

- spay/neuter surgeries
- vaccinations
- microchips
- medical treatment

**FACILITIES**

**\$33,522**

- building repairs & maintenance
- telephone
- utilities

**PROGRAM SERVICES**

**\$160,010**

- daily animal care
- marketing & advertising
- supplies
- administration



**Together we can help our furry  
friends have a great life!**

[angelinacountyhumane.org/donate](http://angelinacountyhumane.org/donate)

**[It's] one of those  
situations where the  
dog picks the human.**

He is a sweet gentle giant.  
Staff worked really well  
with us. We always say  
adopt don't shop.

**ERIN + WINSTON**  
**FUR-EVER**

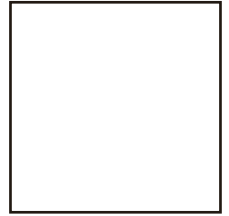


WINNIE BERRY  
**HUMANE**  
**SOCIETY**  
of Angelina County





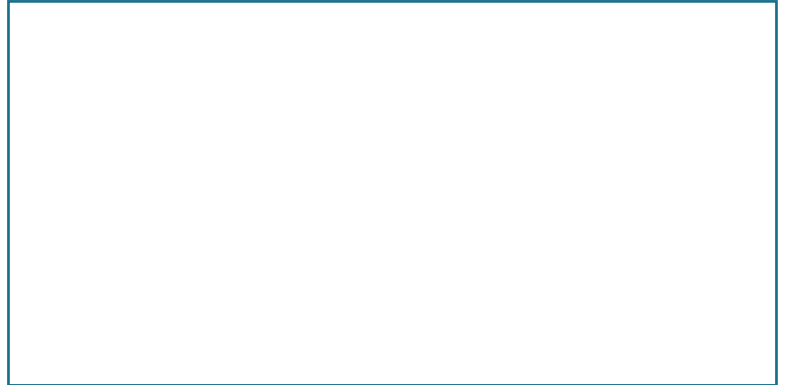
1102 North John Redditt Drive  
Lufkin, Texas 75904



**2020 Annual  
Report Inside**



PLEASE DELIVER TO:



The Humane Society of Angelina County strives to stop the suffering and death of unwanted pets, prevent pet overpopulation, educate the public, provide services to improve animal care and welfare, and provide shelter and support to homeless animals.

WINNIE BERRY  
**HUMANE**  
SOCIETY  
*of Angelina County*



#### 2020 RETENTION RATE

**92% of adopted animals  
found their fur-ever home**



**233  
adoptions**

41% CATS  
59% DOGS

## Get In Touch



1102 N. John Redditt  
Lufkin, Texas 75904



(936) 639-1880



AngelinaCountyHumaneSociety.org



**BECOME A MONTHLY SUPPORTER**  
angelinacountyhumanesociety.org/donate

SEE THE FULL 2020 REPORT INSIDE

FOLLOW US ON  